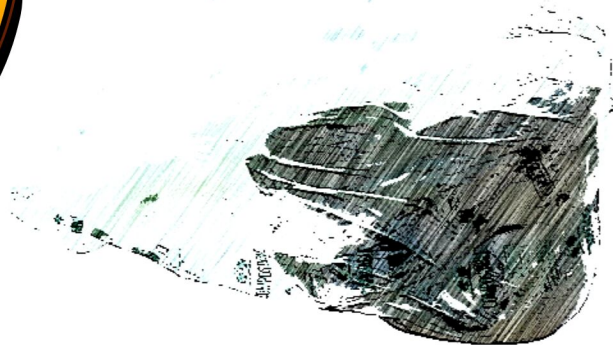
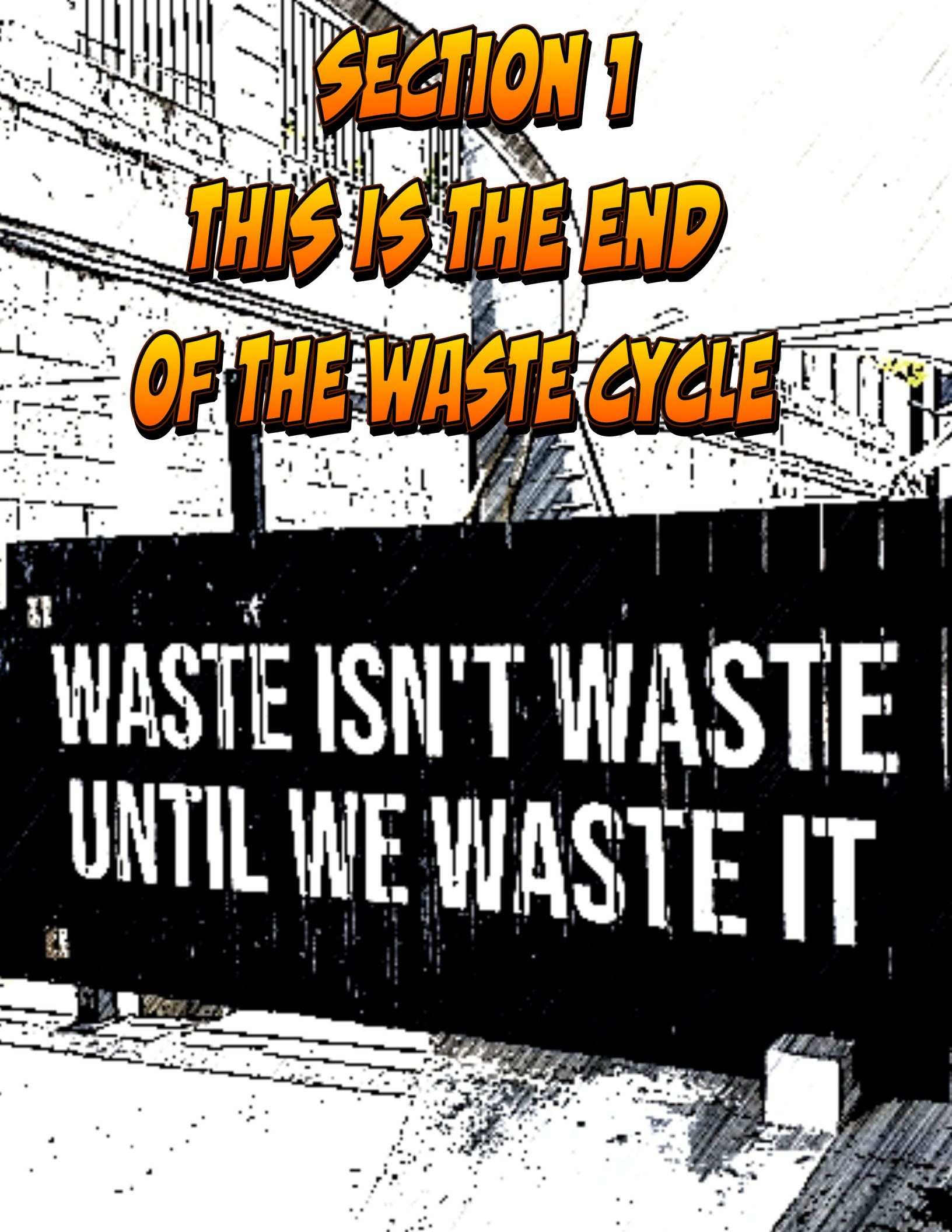


# ELEGANTLY WASTED



# A PARTICIPANT STORY

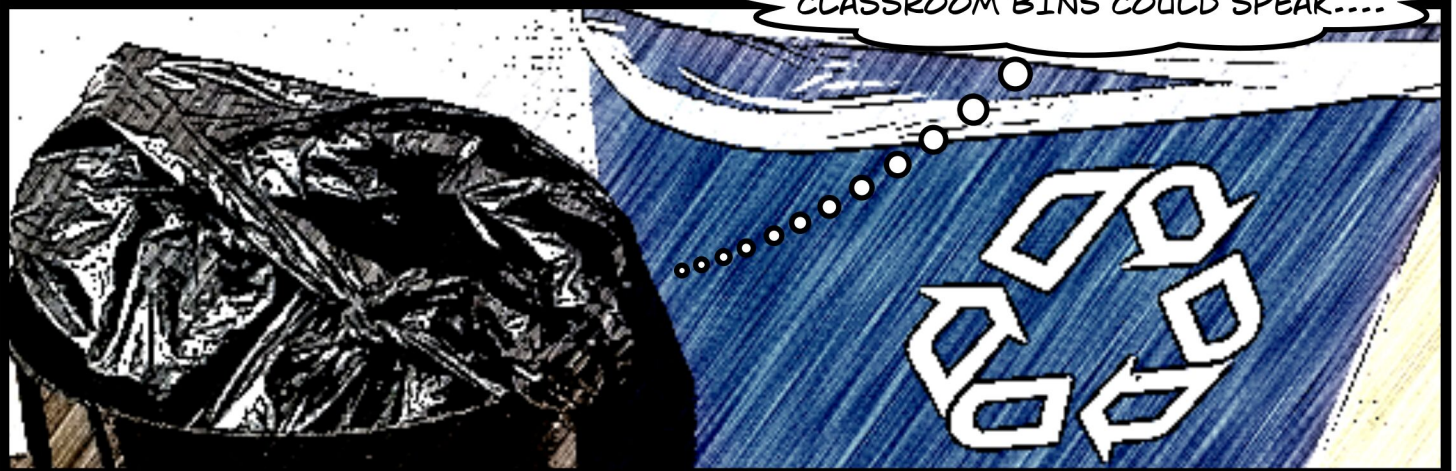


**SECTION 1**  
**THIS IS THE END**  
**OF THE WASTE CYCLE**

**WASTE ISN'T WASTE**  
**UNTIL WE WASTE IT**

# THE END

IF THESE UNIVERSITY CLASSROOM BINS COULD SPEAK....



SOMETIMES BROKEN, LINED WITH POLLUTING PLASTIC, NO GREEN BIN... OFTEN CONTAMINATED WITH MIXED WASTE... UNIVERSITY LEADERS - TAKE NOTE AND ACTION! THIS IS YOUR JOB TOO.



GULLS AND OTHER BIRDS OFTEN USE LANDFILLS AS A FOOD SOURCE.

DIVERSION OF ORGANIC (FOOD) WASTE FROM LANDFILL DISPOSAL COULD REDUCE THEIR PRESENCE AT THE BRADY ROAD RESOURCE MANAGEMENT FACILITY MAKING IT A MORE AESTHETICALLY PLEASING SITE.

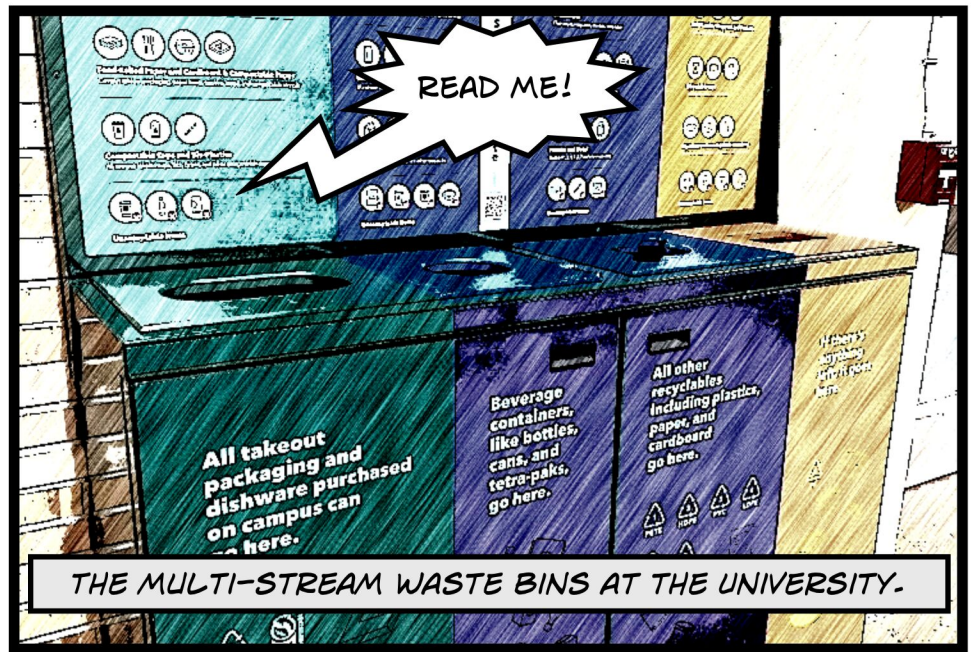
AN ORANGE PEEL THROWN AWAY IN THE WILD...

DON'T LEAVE ME BEHIND!

# WASTED!



THERE ARE PLENTY OF GREAT WASTE MANAGEMENT GUIDES ON CAMPUS!

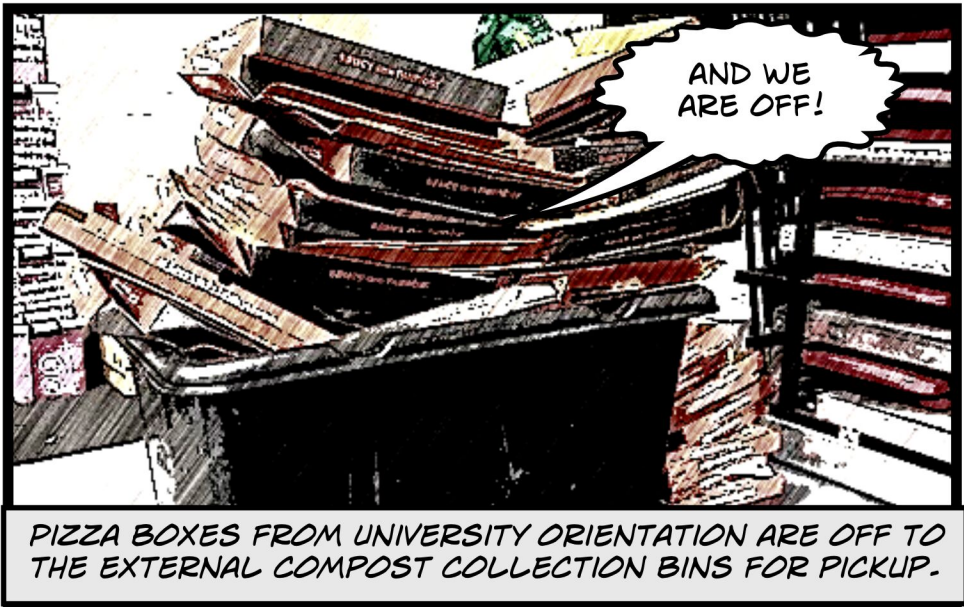


THE MULTI-STREAM WASTE BINS AT THE UNIVERSITY.

SO CLOSE... STUDENTS CAREFULLY STACK COMPOSTABLE PIZZA BOXES FOR RECYCLING.

HELP US!

WHEN THEY SHOULD BE PLACED IN THE ORGANIC BIN.



PIZZA BOXES FROM UNIVERSITY ORIENTATION ARE OFF TO THE EXTERNAL COMPOST COLLECTION BINS FOR PICKUP.



COMMERCIAL FOOD WASTE COLLECTION PRESENTS OPPORTUNITIES FOR WASTE REDUCTION, AS WELL AS WASTE DIVERSION.

A SIMPLE CHIP BAG IN THE GREEN BIN CAN SPOIL THE WASTE PROCESSING...



TYPICAL CONTAMINATION IN UNIVERSITY COMPOST BINS.

CONTAMINATION...

NOT ACCEPTED!

...A DAY IN THE LIFE OF A WASTE MANAGEMENT EMPLOYEE.

TERMS OF SERVICE?

OVERFILL.

COMPOST BINS USED TO THEIR [FULL] POTENTIAL.

CELEBRATE GOOD TIMES, COME ON!

**BRAVO!**

FEED US TO ANIMALS, PLEASE...

THERE IS FOOD THAT COULD STILL BE USED BEFORE TAKEN TO THE COMPOST SITE. THIS FOOD ISN'T SAFE FOR HUMAN CONSUMPTION, BUT COULD BE USED AS ANIMAL FEED.

KITCHEN SCRAPS COLLECTED IN A PAPER BAG - EASILY COMPOSTED IN YOUR BACKYARD OR GREEN CART COLLECTION SERVICE!

THE UNIVERSITY  
ORGANIC COLLECTION  
LOADING BAY



YOUR FOOD WASTE AND  
OTHER COMPOSTABLES ARE  
WELCOME!

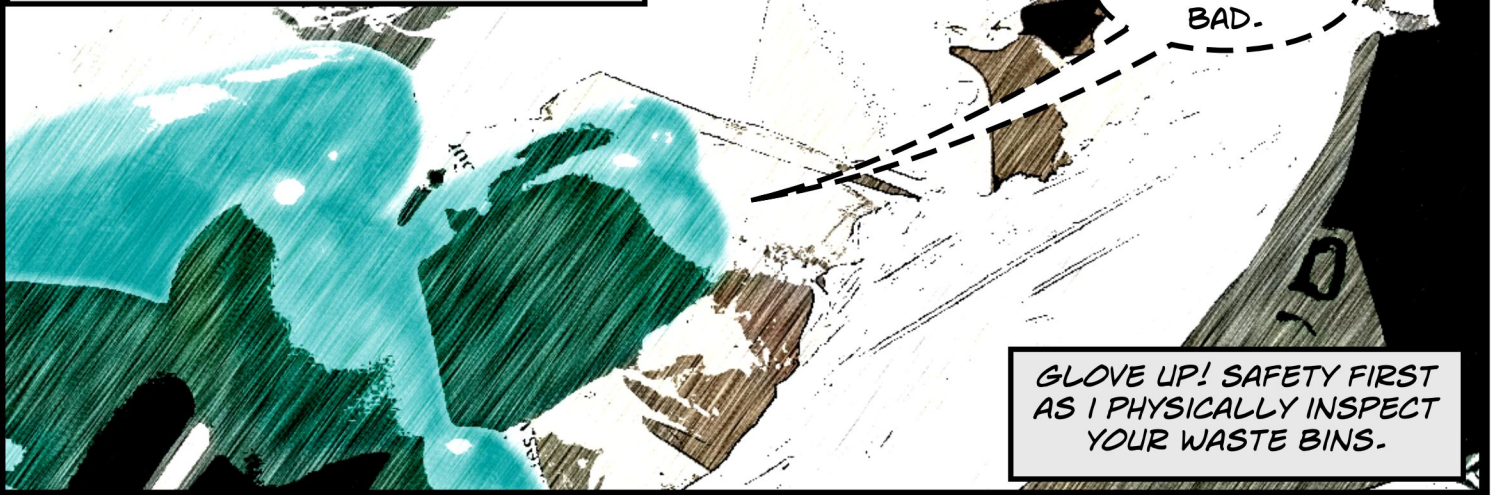
INSIDE ONE  
OF YOUR  
COMPOST  
BINS.



CAN YOU SPOT ANY  
CONTAMINATION?

WHO IS RESPONSIBLE  
FOR WASTE QUALITY?

ENSURING COMPOST BINS ONLY HAVE  
COMPOST IN THEM.

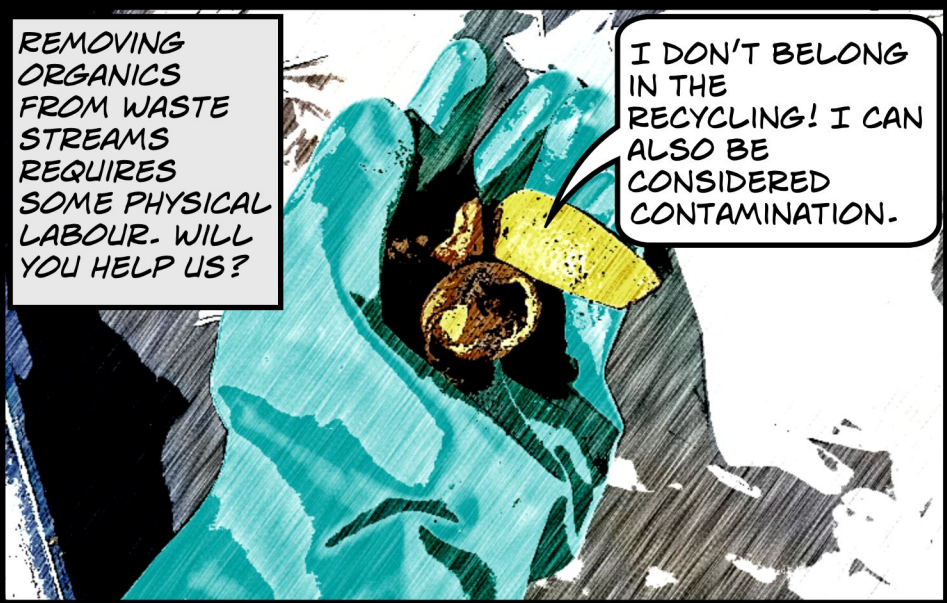


NOT  
LOOKING TOO  
BAD.

GLOVE UP! SAFETY FIRST  
AS I PHYSICALLY INSPECT  
YOUR WASTE BINS.

REMOVING  
ORGANICS  
FROM WASTE  
STREAMS  
REQUIRES  
SOME PHYSICAL  
LABOUR. WILL  
YOU HELP US?

I DON'T BELONG  
IN THE  
RECYCLING! I CAN  
ALSO BE  
CONSIDERED  
CONTAMINATION.

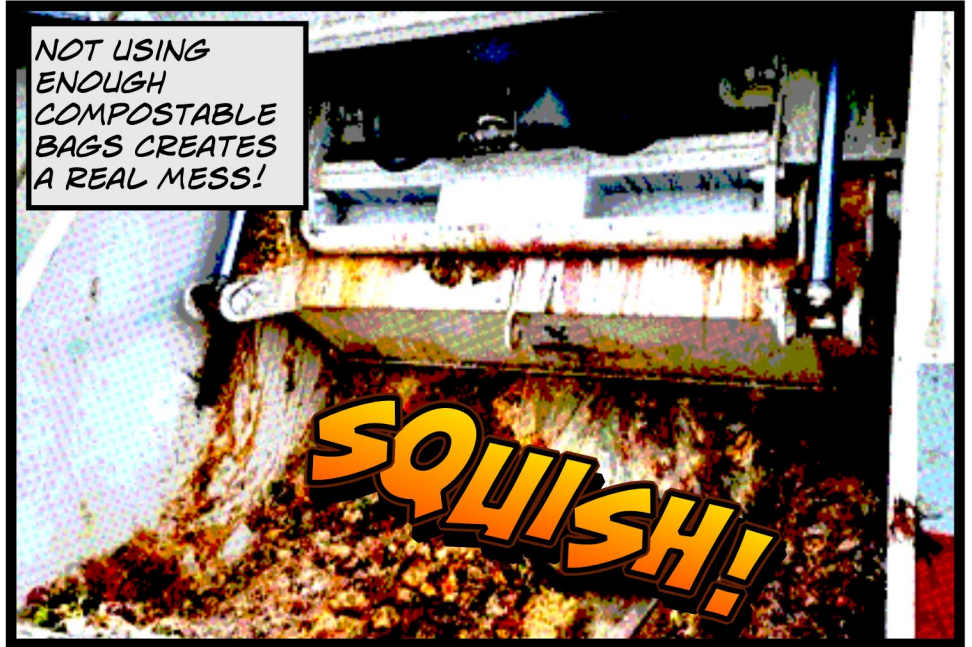


WASTE ISN'T WASTE  
UNTIL WE WASTE IT





UNIVERSITY COMPOST BINS ARE DUMPED INTO THE BACK OF THE COLLECTION TRUCK AND PLACED BACK DOWN SO THE TRUCK CAN EXIT THE CAMPUS.



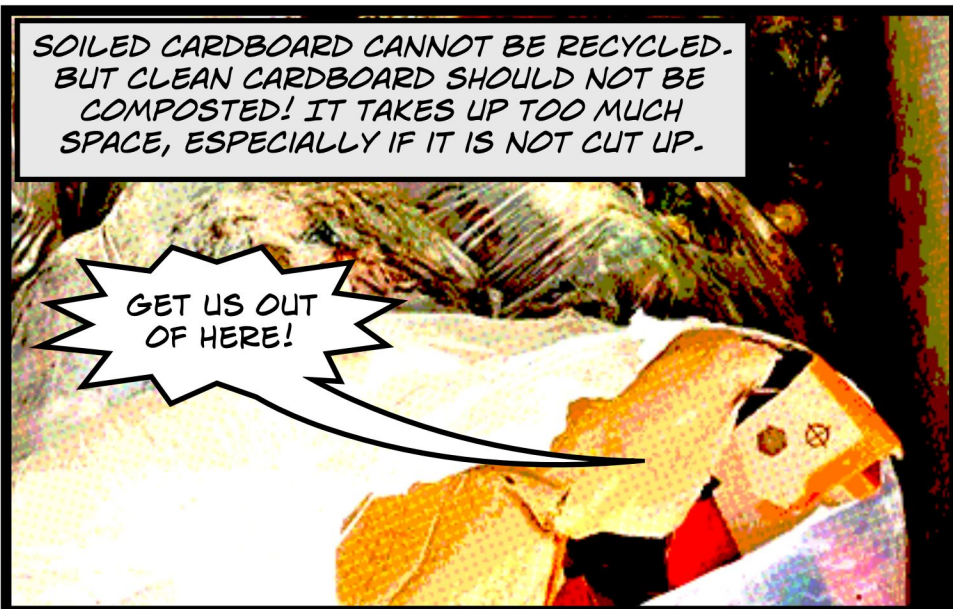
NOT USING ENOUGH COMPOSTABLE BAGS CREATES A REAL MESS!

**SQUISH!**



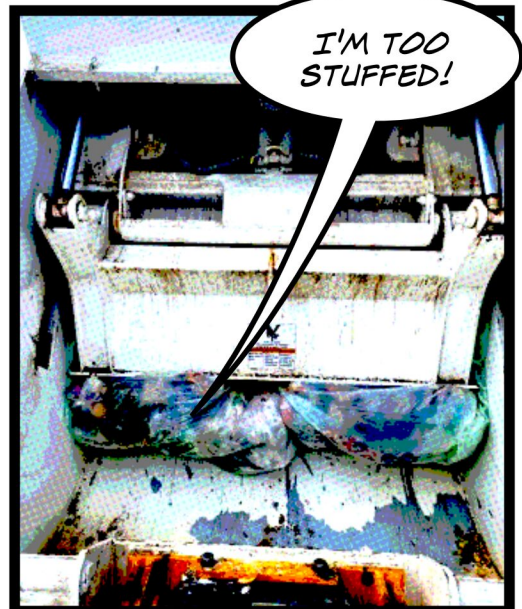
**OUCH!**

CERTAIN CONTENTS, LIKE MEAT, FREEZE OVERNIGHT. THIS MAKES IT INCREDIBLY DIFFICULT TO COLLECT IN THE WINTER.



SOILED CARDBOARD CANNOT BE RECYCLED. BUT CLEAN CARDBOARD SHOULD NOT BE COMPOSTED! IT TAKES UP TOO MUCH SPACE, ESPECIALLY IF IT IS NOT CUT UP.

GET US OUT OF HERE!



I'M TOO STUFFED!

COMPOSTABLE BAGS MAKE IT NEAT AND TIDY FOR COLLECTION, BUT...



...TOO MANY BAGS CAN DRAMATICALLY ALTER THE DECOMPOSITION PROCESS.

MORE THAN JUST FOOD WASTE CAN BE COMPOSTED. LIGHT AND BULKY MATERIAL LIKE PAPER TOWELS FROM ACROSS CAMPUS CAN ALSO BE COLLECTED.

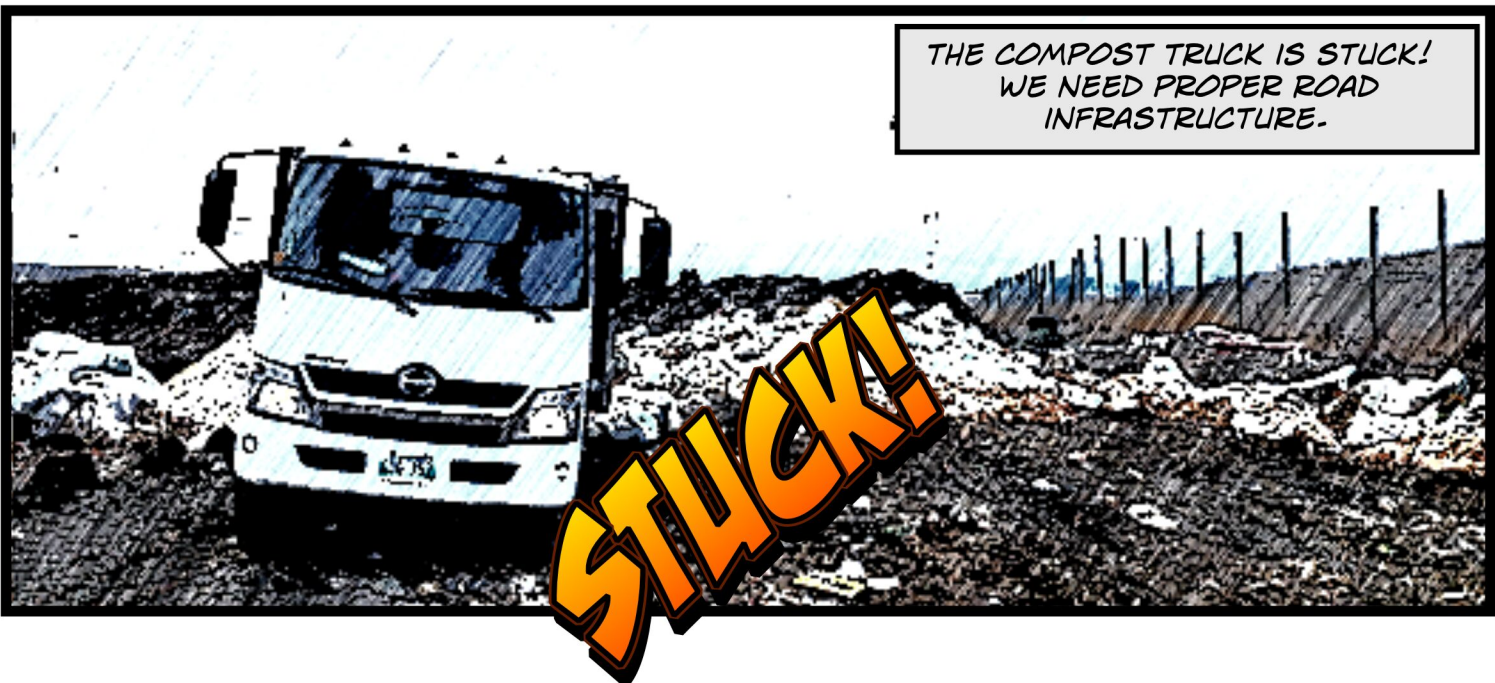


FULL COMPOST COLLECTION TRUCK ON ITS WAY TO THE COMPOST PILE.



A COMPOSTABLE BAG FOR COMPOSTABLE FOOD WASTE!

THE COMPOST TRUCK IS STUCK! WE NEED PROPER ROAD INFRASTRUCTURE.



ORGANIC WASTE READY TO BE WINDROWED AND COVERED USING...



...A FINISHED COMPOST AND STRAW TO INCUBATE FOR THE CONTROLLED COMPOSTING PROCESSING TO BEGIN.

**TURBO CHARGE COMPOST**

**HEALTHY SOIL = HEALTHY COCOA =  
HEALTHY CHOCOLATE!**

**NOTHING GOES TO WASTE!**

I AM AN ICONIC LANDMARK IN WINNIPEG BUT FEW KNOW MY ROOTS! DO YOU KNOW MY SIGNIFICANCE?

**GARBAGEHILL**

WHAT IS YOUR ROLE TO BETTER MANAGE WASTE?

**WASTE ISN'T WASTE  
UNTIL WE WASTE IT**

THIS IS VALUABLE HEAT (ENERGY) ESCAPING FROM A FRESHLY TURNED COMPOST PILE. CATCH ME!



# BEAUTIFUL COMPOST MAKES...

WINDROWS OF ORGANIC WASTE ARE PHYSICALLY TURNED WITH MACHINES TO INTRODUCE AIR AND ACCELERATE THE COMPOSTING PROCESS AND MANAGE THE TEMPERATURE OF THE PILE.

A vertical farm with lush green plants growing in a multi-tiered structure. The plants are densely packed and appear to be leafy greens. The structure is made of wooden or metal frames, and the plants are growing in a series of stacked trays or containers. The background is bright and slightly blurred, suggesting an indoor or greenhouse environment.

# BEAUTIFUL FOOD

VERTICAL FARMING FROM COMPOSTED ORGANIC WASTE. IT EXISTS AND WORKS. STUDENTS CAN SHOWCASE THIS TECHNOLOGY AND FEED PEOPLE IN COMMON AREAS OF UNIVERSITIES. EXPERIMENT. FAIL. TAKE RISKS. LEAD FROM THE FRONT!



AFTER 3 - 6 MONTHS OF CURING A  
FINISHED COMPOST IS ACHIEVED.

# WHAT IS YOUR ROLE IN WASTE MANAGEMENT?

WE ALL HAVE A ROLE TO PLAY TO  
ADDRESS THE WICKED PROBLEM OF  
WASTE MANAGEMENT...



# SECTION 2

**THIS IS THE MIDDLE  
OF THE WASTE CYCLE**

S



Food waste, including pizza, and bones



Cardboard and Compostable Paper  
Clean paper towels, napkins, wood, and compostable dishes



Cups and Bio-Plastics  
Cups, lids, straws, and other compostable items



Unacceptable Items

## Recycling



Drink Containers  
Plastics #1, 2, 3, 4, 5, 7, alum



Drink Containers  
Aluminum cans, and glass bottles



Unacceptable Items

HOW TO RECYCLE YOUR WASTE

# DOES



Clean Paper  
Clean paper and folders, receipts, newspapers

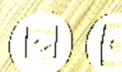


Cardboard & Paper Products  
Clean paper bags and boxes (please unfold)



Unacceptable Items

Hand



Plastic, W  
Unacceptable Items



Disposable cups  
Non-recyclable plastic cups



Styrofoam and non-  
recyclable plastic cups



Unacceptable Items

# WASTE SORTING

Beverage

# INCREASE

go here.

All other

Recyclables  
including plastics, and  
go here.



# CONSUMPTION?

# THE MIDDLE

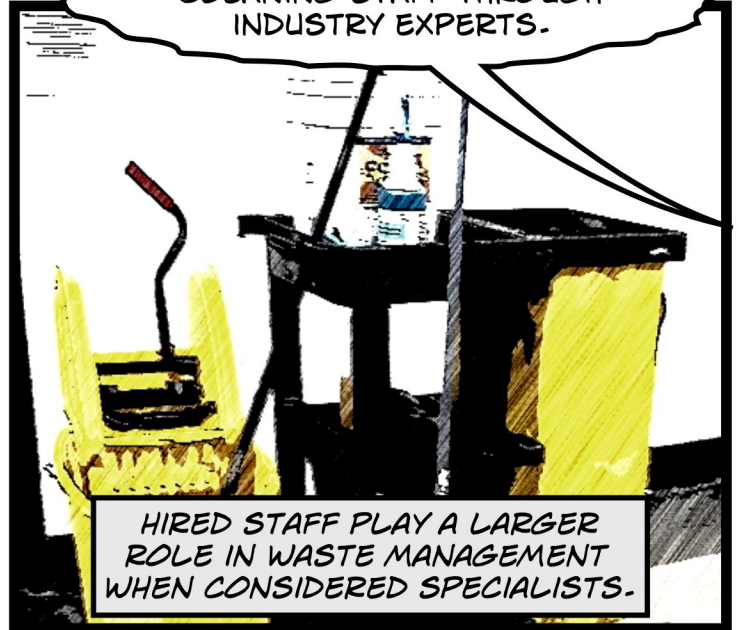
SIMPLE ACTIONS MAKE A BIG DIFFERENCE. INVESTED CAFETERIA PROVIDERS ARE VITAL TO RESPONSIBLE FOOD WASTE MANAGEMENT AND A MORE SUSTAINABLE CAMPUS.

TRIMMED VEGGIES ARE PERFECT COMPOST!



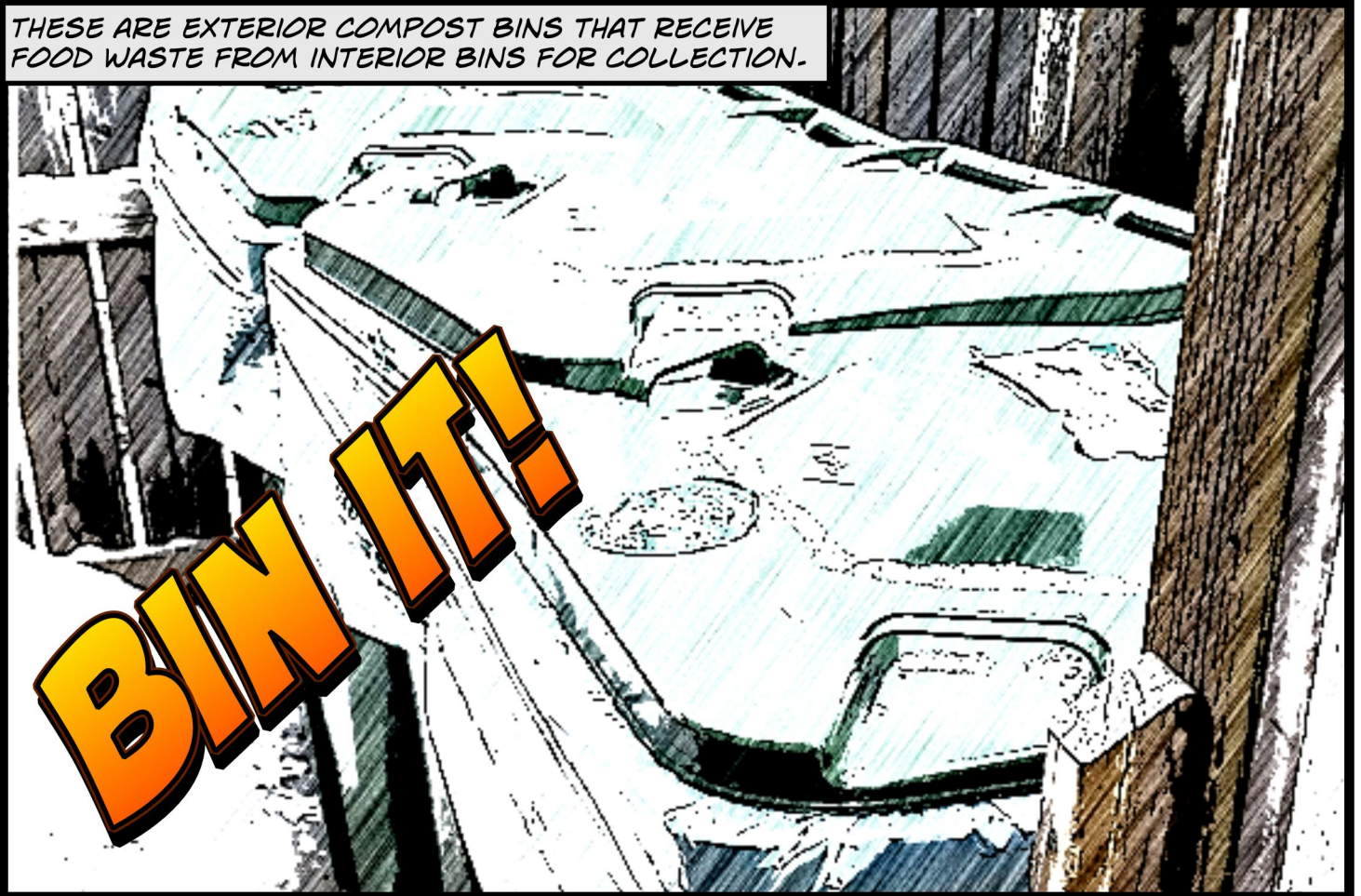
LET'S TRAIN CLEANING STAFF THROUGH INDUSTRY EXPERTS.

HIRED STAFF PLAY A LARGER ROLE IN WASTE MANAGEMENT WHEN CONSIDERED SPECIALISTS.

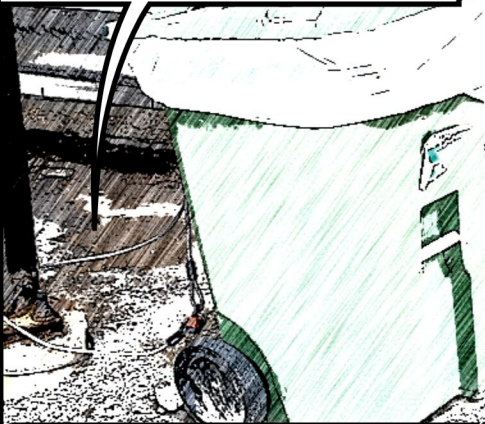


THESE ARE EXTERIOR COMPOST BINS THAT RECEIVE FOOD WASTE FROM INTERIOR BINS FOR COLLECTION.

# BIN IT!



I AM LOCKED UP TO PREVENT BEING STOLEN!



COMPOST BINS GET STOLEN MORE FREQUENTLY DOWNTOWN.

BAGS ON THE GROUND RISK BEING COLLECTED OR EARNING ADDITIONAL FEES FOR DECONTAMINATION.



THIS IS NOT WHERE I BELONG!

CONTAMINATION MAY RESULT IN A REFUSED COLLECTION OR ADDITIONAL DECONTAMINATION CHARGES.



I DON'T BELONG HERE!

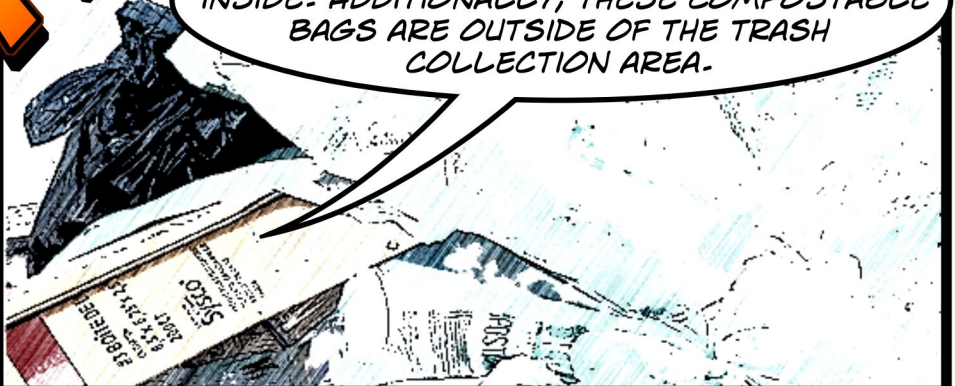
**A MESS!**

I DON'T BELONG IN THE COMPOST BIN!



PEOPLE DO NOT ALWAYS PAY CLOSE ATTENTION TO THE BIN TYPE WHEN THEY ARE THROWING SOMETHING AWAY.

COMPOST BAGS ARE USED BUT THEY HAVE CONTAMINATION INSIDE. ADDITIONALLY, THESE COMPOSTABLE BAGS ARE OUTSIDE OF THE TRASH COLLECTION AREA.



ONE CAUSE OF CONTAMINATION IS CONFUSION WITH BIN COLOURS. GREEN IS USUALLY ASSOCIATED WITH ORGANIC WASTE, BUT SEVERAL COMPANIES STILL USE GREEN BINS FOR GARBAGE AND RECYCLING, POSSIBLY TO PROVIDE A FRIENDLY ENVIRONMENTAL IMAGE.

A TEAM EFFORT!

HOORAY! ORGANIC WASTE FOR THE COMPOST BIN!

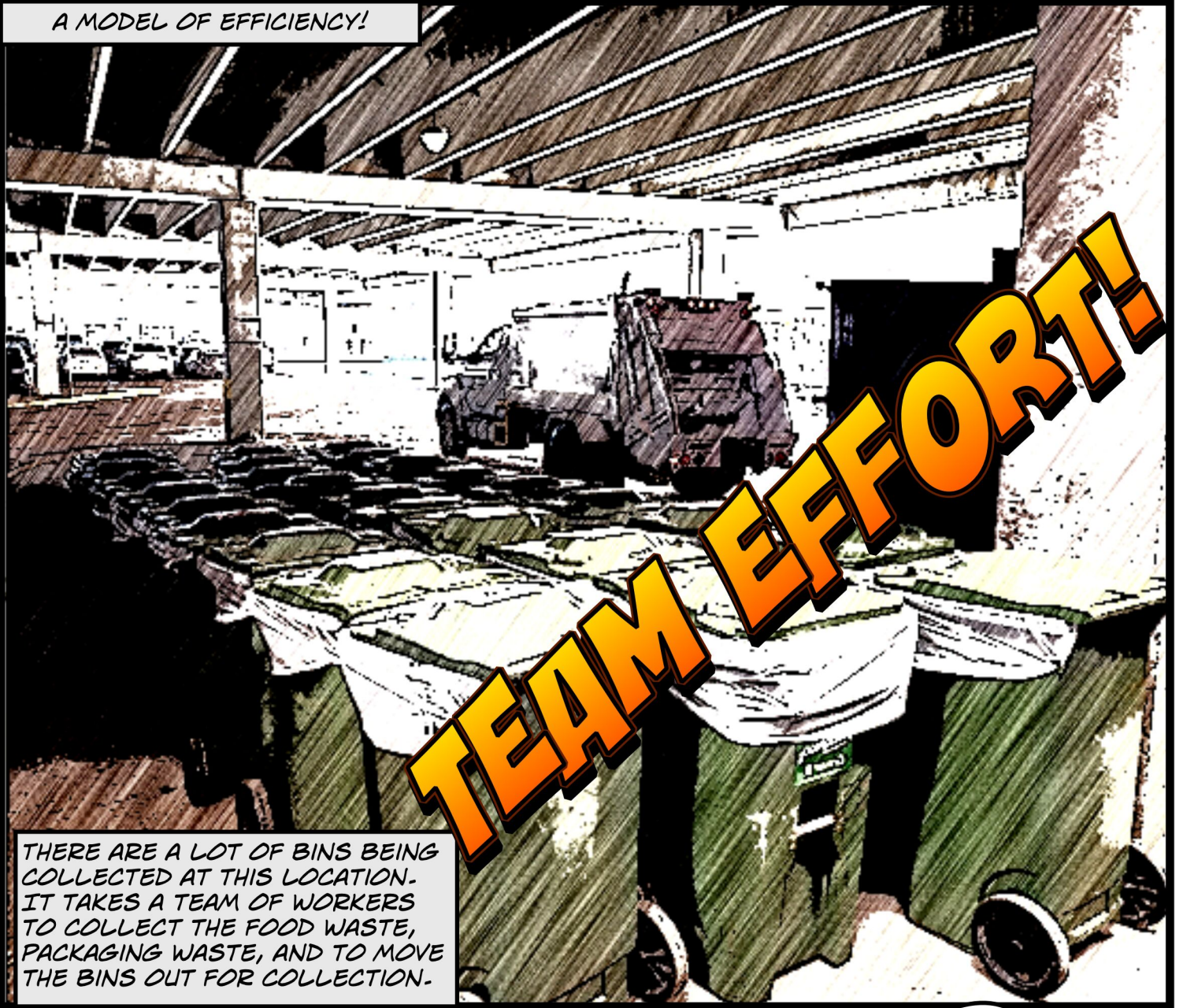
A GREAT EXAMPLE OF A PROPERLY USED COMPOST BIN AND CLEANING STAFF PLACING COMPOSTABLES IN THE CORRECT PLACE.

AN EMPTY COMPOST BIN WITH ...

... A FRESH COMPOSTABLE BAG AFTER A COLLECTION

DON'T COMPOST US! WE ARE SWEET TREATS FOR THOSE IN NEED! CONTACT YOUR LOCAL FOOD PROGRAM.

A MODEL OF EFFICIENCY!



THERE ARE A LOT OF BINS BEING COLLECTED AT THIS LOCATION. IT TAKES A TEAM OF WORKERS TO COLLECT THE FOOD WASTE, PACKAGING WASTE, AND TO MOVE THE BINS OUT FOR COLLECTION.

COMMUNITY DROP OFF SITES HAVE BEEN A SUCCESS THROUGHOUT THE CITY. OFTEN AN ENTHUSIASTIC CITIZEN SHARES HOW IT POSITIVELY IMPACTS THEIR LIVES.



BECAUSE OF US, THEY ONLY TAKE THEIR GARBAGE OUT EVERY THREE WEEKS!

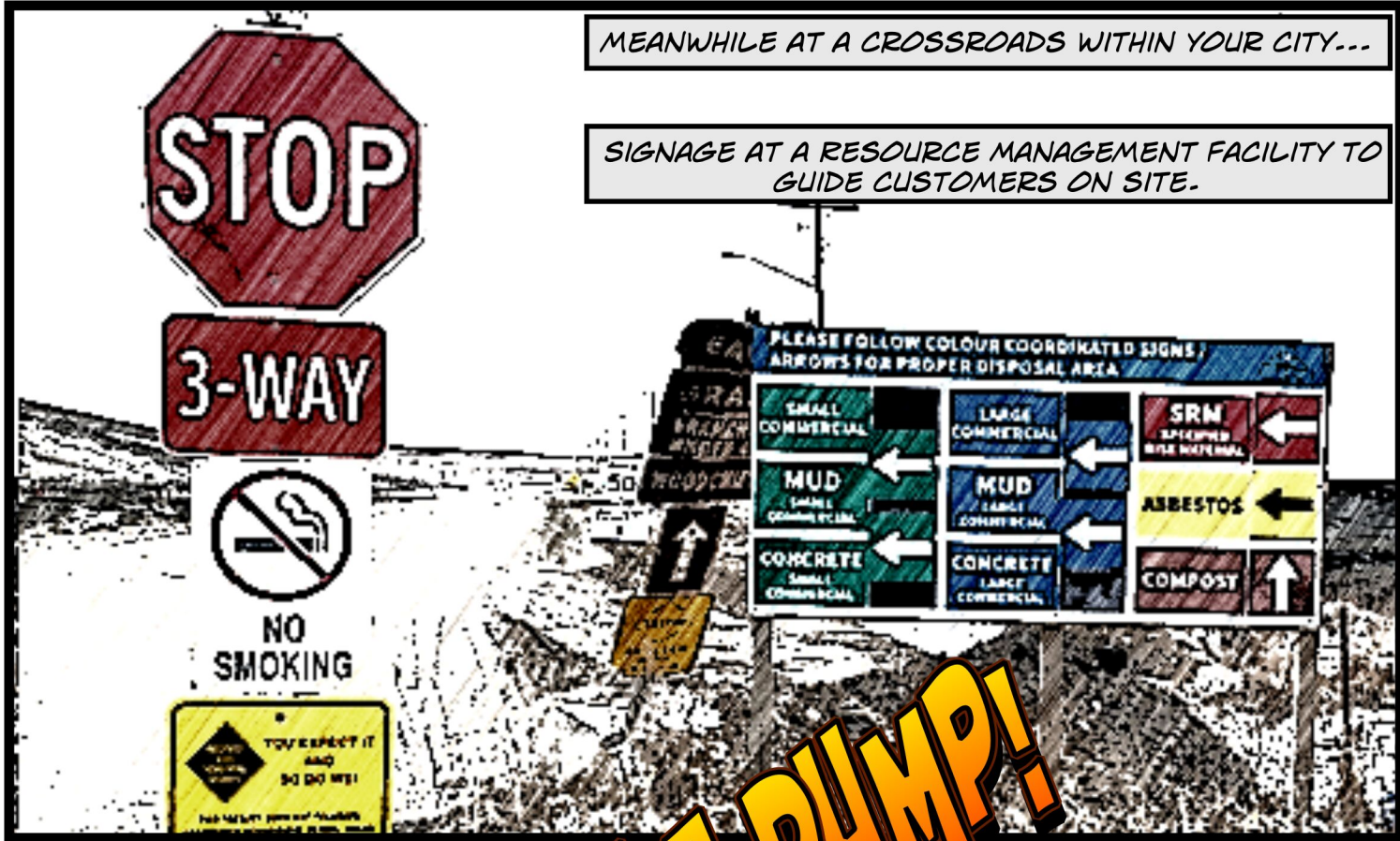


PLEASE THINK OF MY  
SAFETY AND WORKLOAD.

THE NEXT TRANSITION OF  
YOUR WASTE IS HUMAN!

MEANWHILE AT A CROSSROADS WITHIN YOUR CITY...

SIGNAGE AT A RESOURCE MANAGEMENT FACILITY TO GUIDE CUSTOMERS ON SITE.



**NOT A DUMP!**

CLEAN LUMBER AND OTHER MATERIALS CAN BE SEPARATED TO SUPPORT WASTE DIVERSION EFFORTS.



THIS IS A WASTE MANAGEMENT FACILITY, NOT A DUMP.

MANY BALES OF RECYCLABLES READY FOR MARKET.

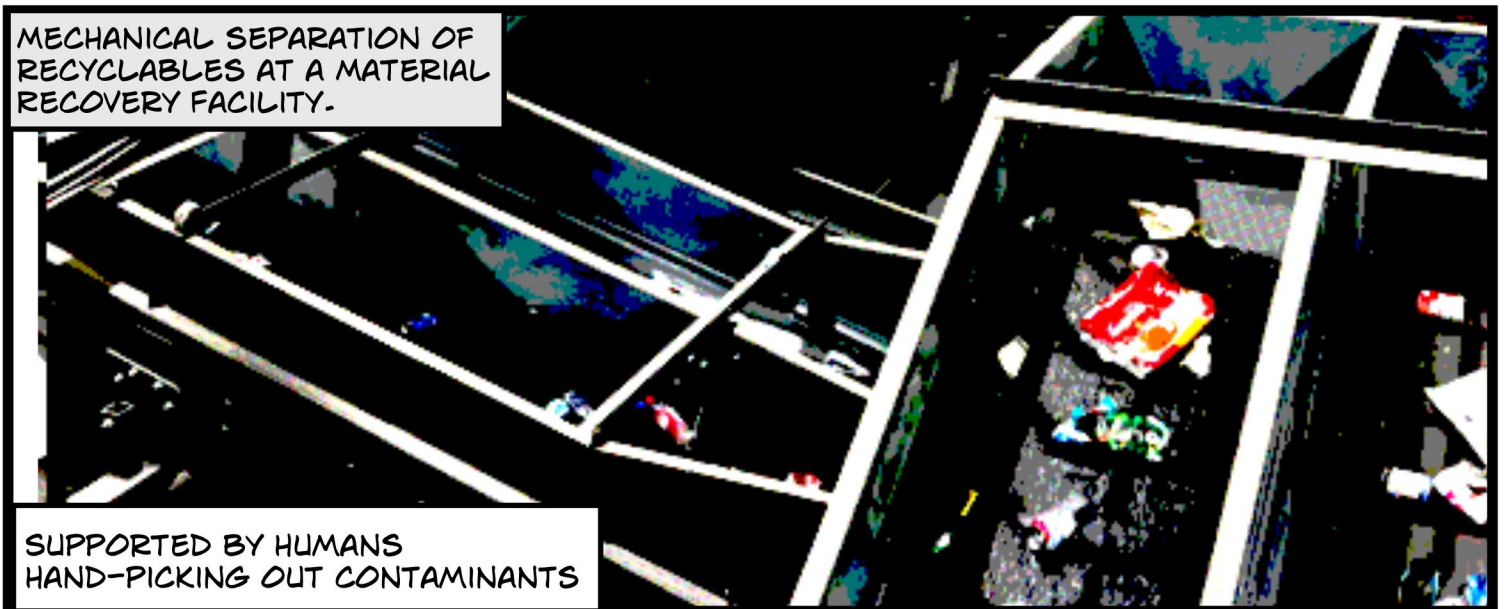
I AM INVALUABLE.

I HAVE CURRENCY.

MONETIZE ME!

MECHANICAL SEPARATION OF RECYCLABLES AT A MATERIAL RECOVERY FACILITY.

SUPPORTED BY HUMANS  
HAND-PICKING OUT CONTAMINANTS



MACH HYSPEC

**OR...**

**IS WASTE SORTING  
THE REVOLUTION?**

WE ALL HAVE A ROLE TO PLAY TO  
ADDRESS THE WICKED PROBLEM OF  
WASTE MANAGEMENT...



**THE BEGINNING**

**OF THE WASTE CYCLE**

# THE BEGINNING

THIS IS YOUR CAMPUS...



THE UNIVERSITY OF WINNIPEG OFFERS A WIDE RANGE OF LEARNING OPPORTUNITIES TO SUPPORT WASTE MANAGEMENT.



THIS BUILDING REPRESENTS THE UNIVERSITY OF WINNIPEG'S COMMITMENT TO SUSTAINABILITY, HOUSING THE CAMPUS SUSTAINABILITY OFFICE AND SUPPORTING ENVIRONMENTAL ACTION ON CAMPUS.

THE AUDIT REPORT SHOWS THE UNIVERSITY'S ACCOUNTABILITY TO ITS SUSTAINABILITY COMMITMENTS AND THE RECOGNITION THAT WASTE MANAGEMENT REQUIRES ONGOING EVALUATION.

**Taking out our trash:  
Insights from the UWinnipeg  
2023 waste audit**



THE UNIVERSITY OF  
WINNIPEG

Sustainability

NEW INFORMATION HERE!



NEW INFORMATION REGARDING HOW TO SORT WASTE HAS BEEN POSTED!

TAKE TIME TO LEARN THE BINS AND VISIT THE WASTE GUIDES ACCESSIBLE THROUGH THE QR CODE.

## Waste Sorting Station

Do your part to reduce UWinnipeg's environmental impact. Please take your time to separate your compostable, recyclable, and landfill items and place them in the correct bin.

Together, we are creating a more sustainable campus and preserving the planet for future generations.

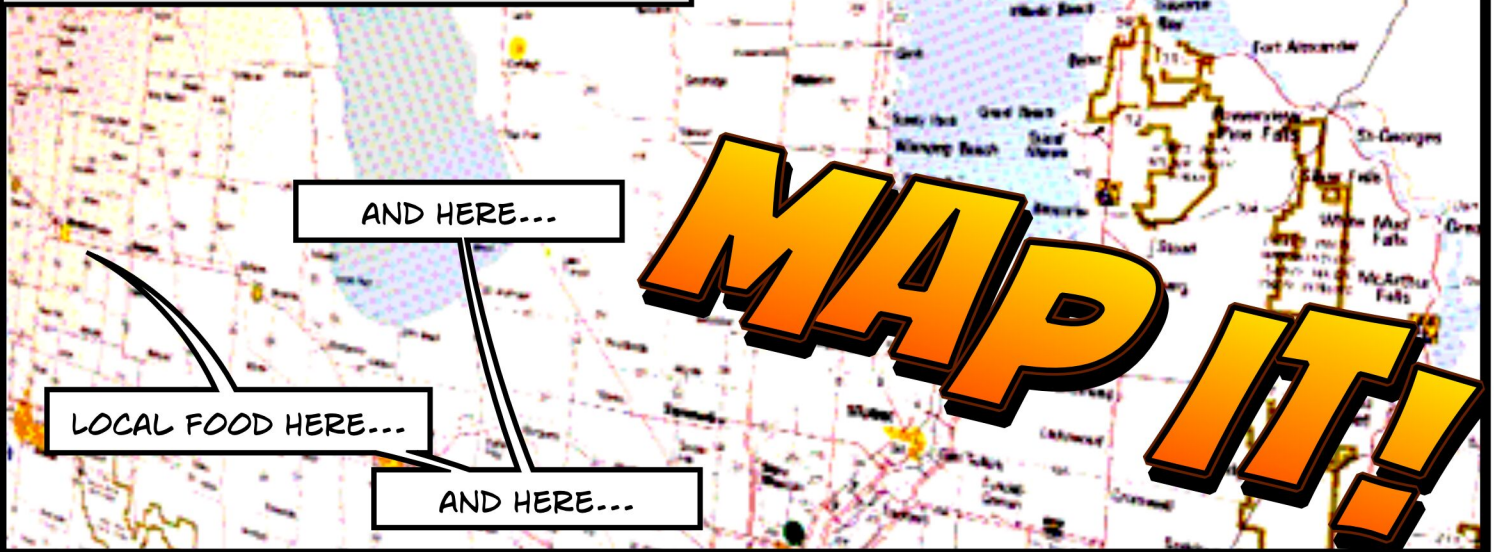


THE UNIVERSITY OF WINNIPEG

Campus Sustainability Office

SUSTAINABILITY AMBASSADORS ARE AVAILABLE TO ANSWER ANY WASTE RELATED QUESTIONS!

WHERE OUR CAMPUS FOOD COMES FROM.



MANITOBA IS AN AGRICULTURAL HUB FOR CANADA. WE PRODUCE MANY ITEMS PRESENT IN CANADA'S FOOD SYSTEM AND EXPORTS.



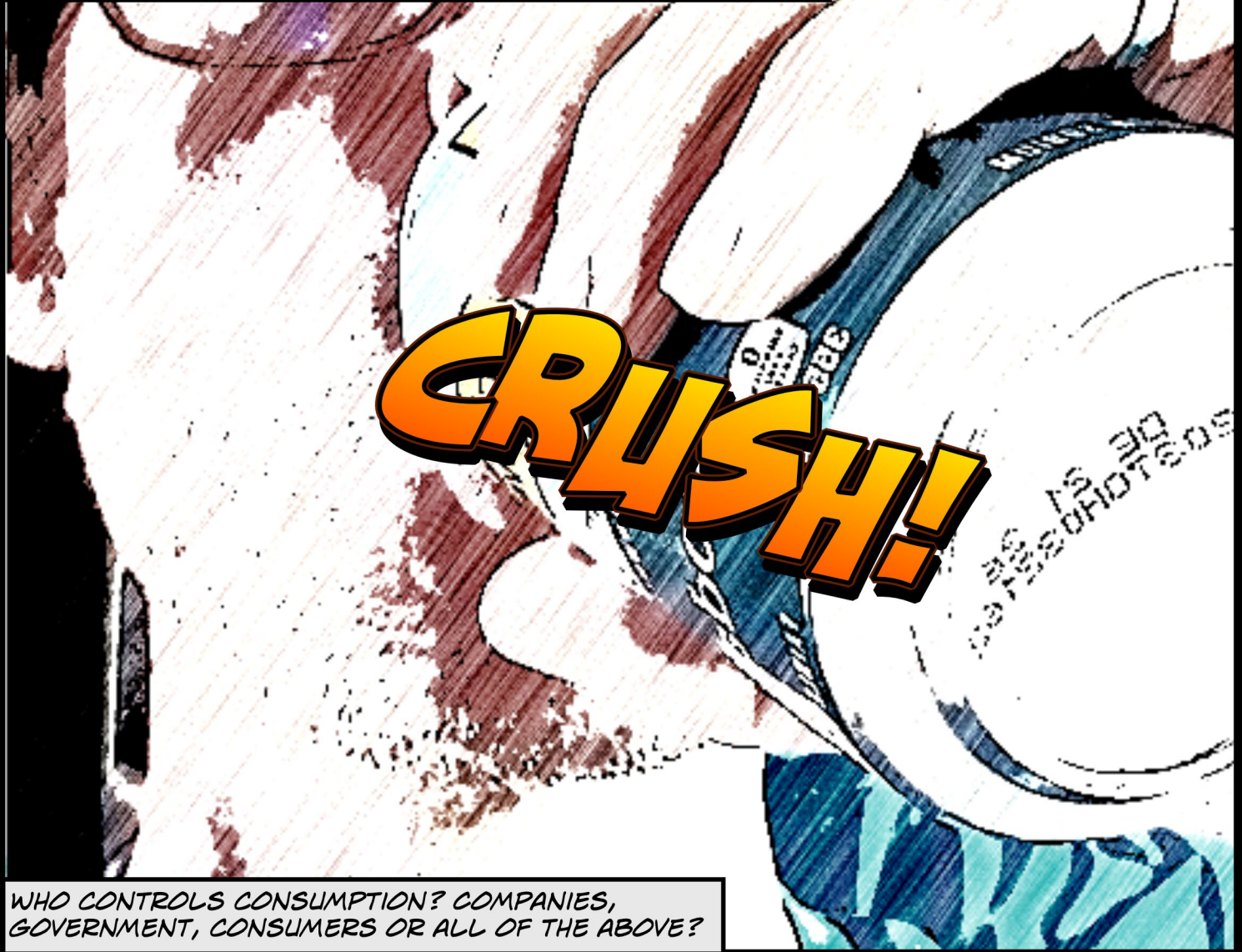
AM I WHERE THE FOOD SYSTEM STARTS?



INSTEAD OF PURCHASING SNACKS FROM VENDING MACHINES, SUPPORT LOCAL FROM YOUR CAMPUS KITCHEN.



IF I CONSUME ONE CAN OF SODA THAT IS 100% RECYCLED, AM I PART OF THE PROBLEM OR SOLUTION? OR BOTH?



WHO CONTROLS CONSUMPTION? COMPANIES, GOVERNMENT, CONSUMERS OR ALL OF THE ABOVE?

**START WITH  
CLEAN AND FREE  
DRINKING WATER**

**FOR ALL**



# Banjo squirrel



Judges your waste habits

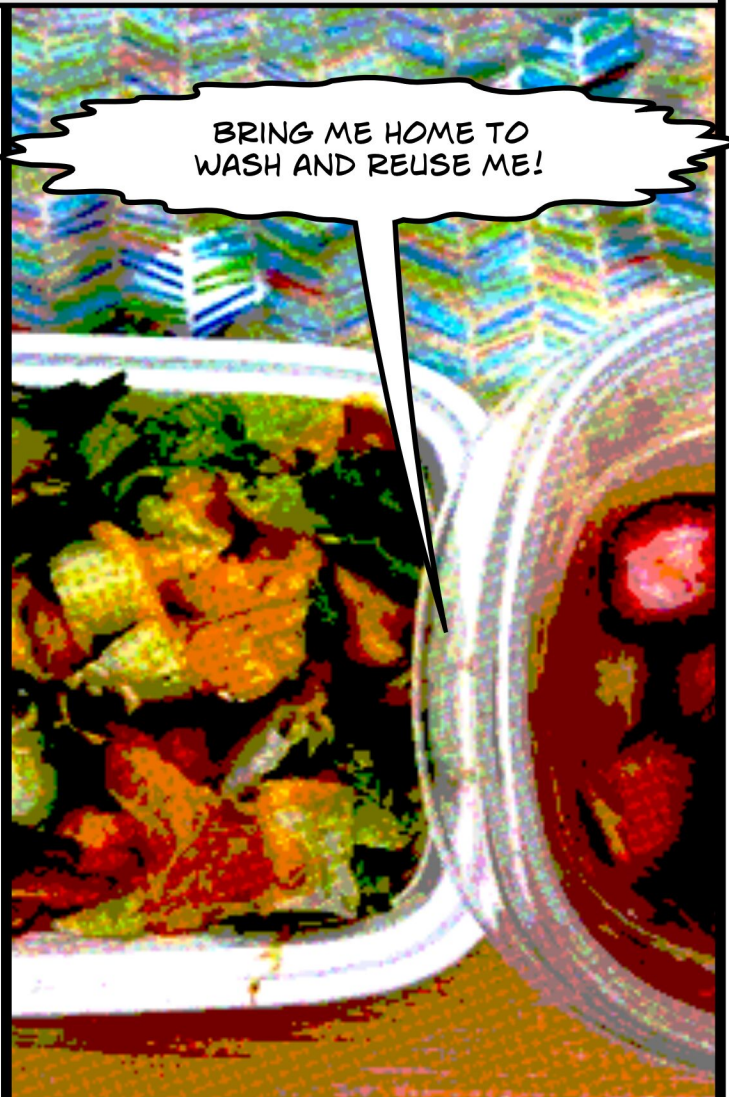
BANJO WHAT?? ARE YOU NOT A TAD CURIOUS ABOUT ME? WOULD YOU PREFER READING AN AUDIT REPORT OR SOME OF MY TIPS AND TRICKS TO LIVE A CLEANER LIFE?

HUMOUR CAN BE A GREAT TOOL FOR EDUCATION. WHO IS YOUR WASTE MANAGEMENT MASCOT?

FOOD FROM THE FARMS MAKE IT TO THE LOCAL GROCERY STORE FOR EVERYONE TO BUY.



BRING ME HOME TO PACK ME IN YOUR LUNCH!



BRING ME HOME TO WASH AND REUSE ME!

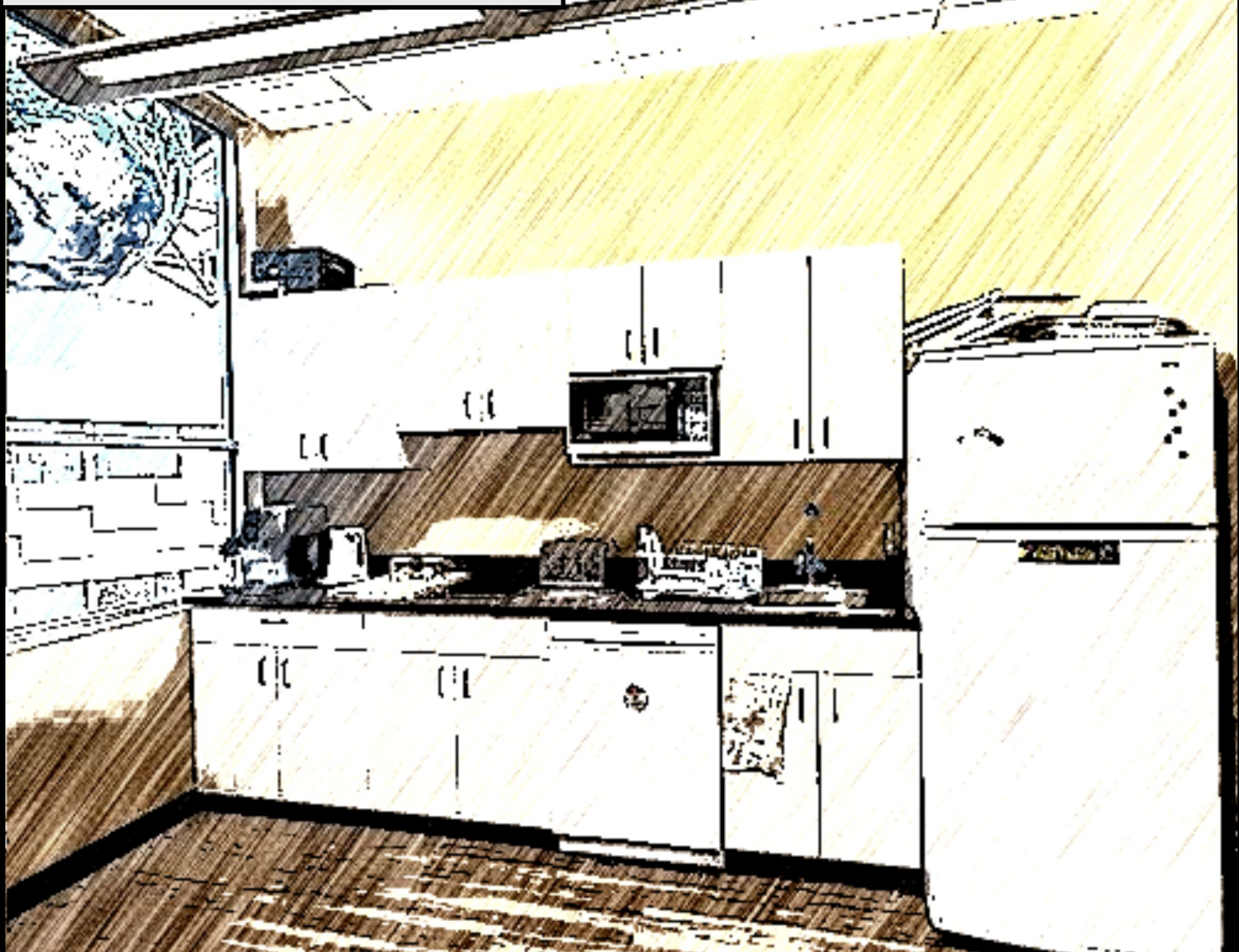
BRINGING YOUR LUNCH FROM HOME IN REUSABLE CONTAINERS ALLOWS YOU TO REDUCE YOUR CONSUMPTION OF WASTEFUL PRODUCTS, SAVE YOU MONEY, AND CAN BE HEALTHIER!

MICROWAVES FOR 9000 STUDENTS...



A GREAT IDEA TO WARM UP FOOD FROM HOME, BUT....

KITCHENS FOR 2000 STAFF MEMBERS...



WHY NOT THE SAME STANDARDS FOR STUDENTS AS THEY LEARN TO BE ADULTS?

SUPPLIER LOADING BAY.

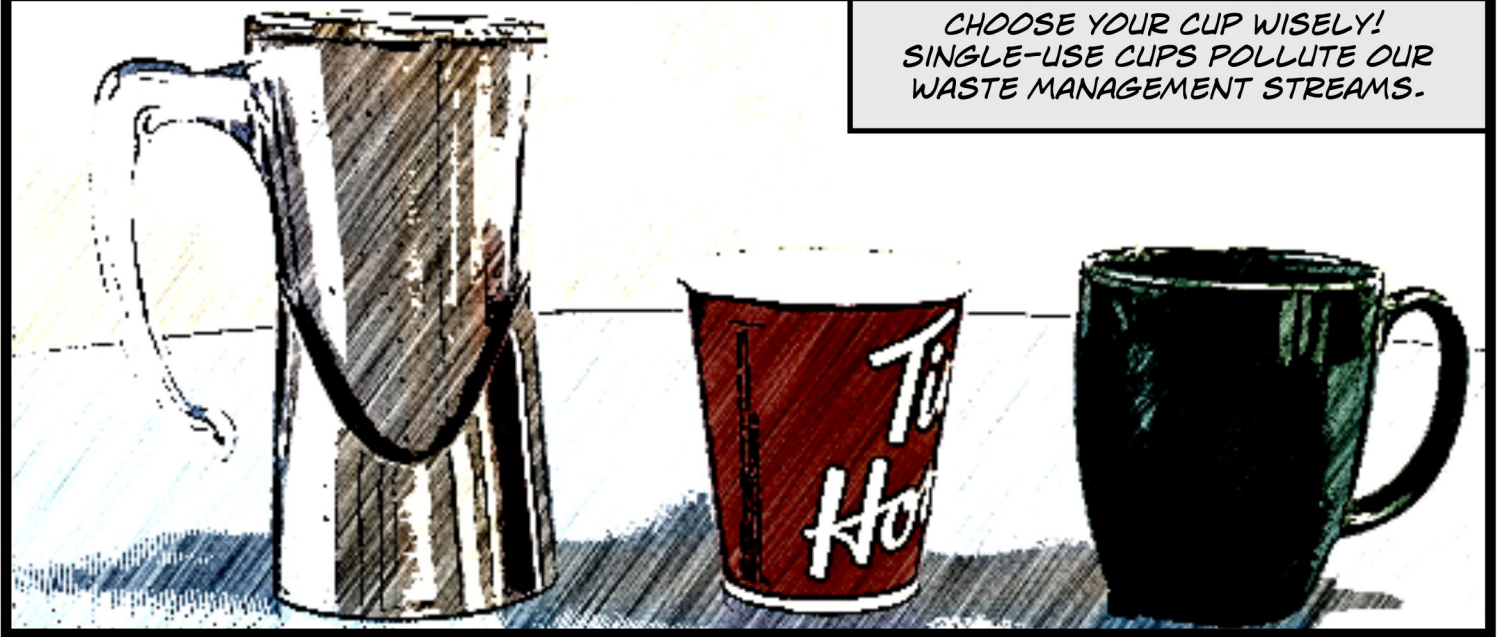
I AM FROM THE LOCAL COMMUNITY FOLKS! PLEASE DO NOT WASTE MY EFFORTS.

CAMPUS FOOD SERVICES HAS OVER 50 INGREDIENT SUPPLIERS AND PURCHASED OVER 70% LOCAL! 60% OF THOSE SUPPLIERS WERE SMALL TO MEDIUM SIZED FAMILY-OWNED BUSINESSES.

CAMPUS FOOD ABOUT TO BE DEVoured!

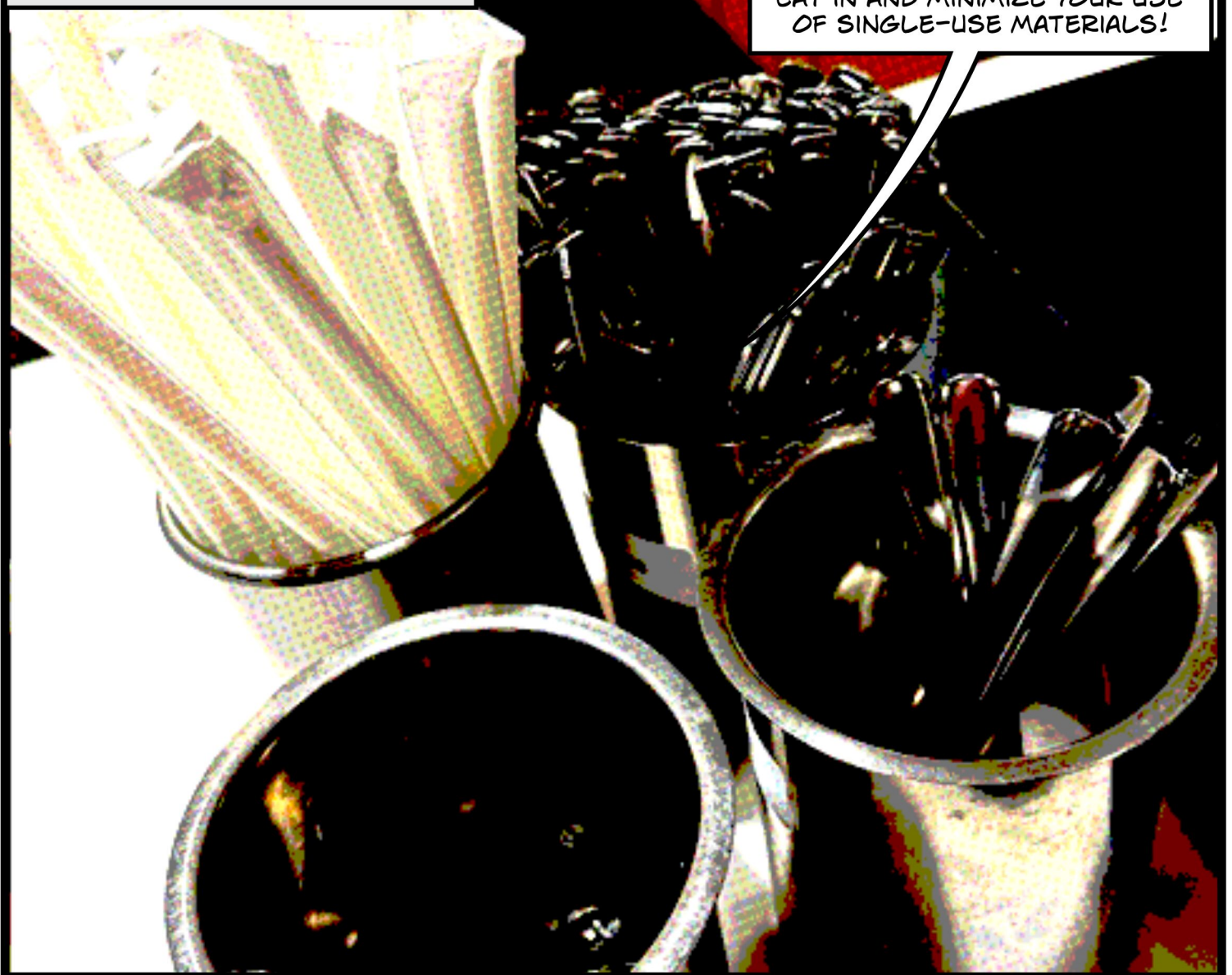
IF THERE IS ANY LEFT, I CAN BE COMPOSTED!

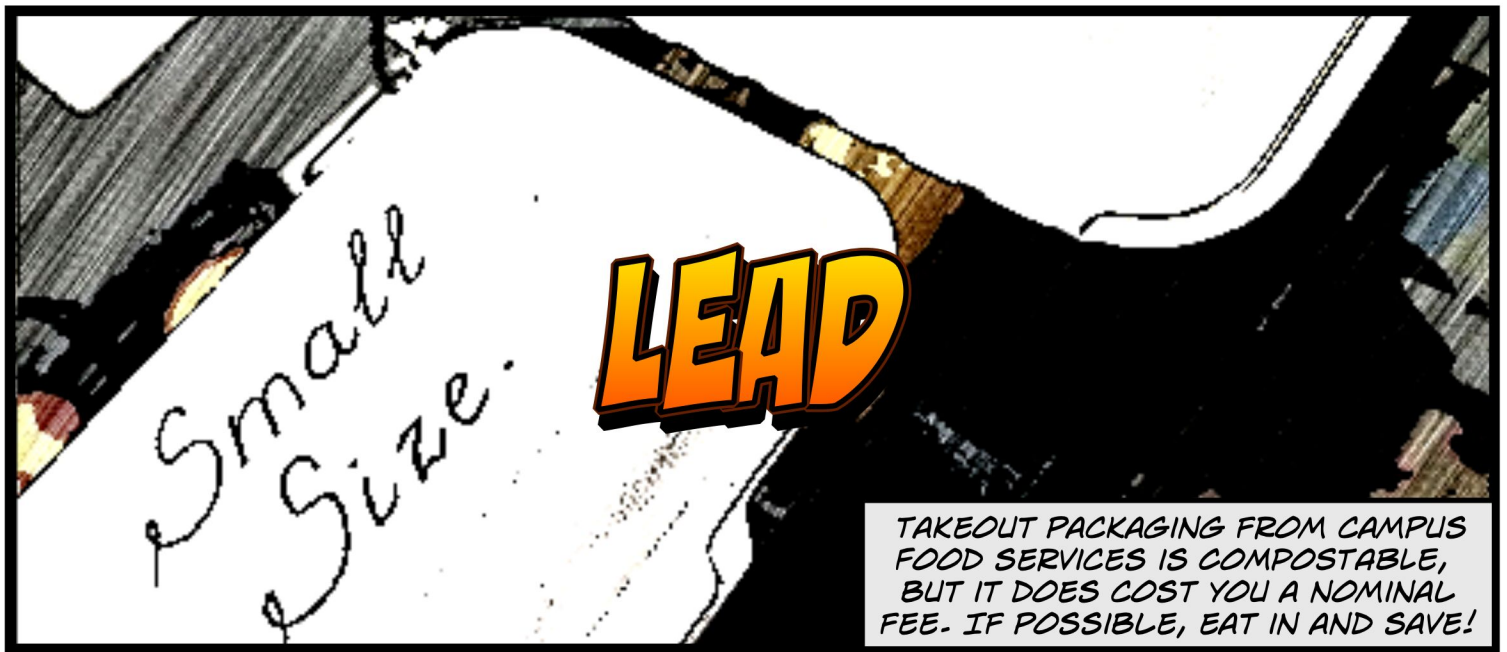
CHOOSE YOUR CUP WISELY!  
SINGLE-USE CUPS POLLUTE OUR  
WASTE MANAGEMENT STREAMS.



IT IS ABOUT CHOICES ON CAMPUS.

EAT IN AND MINIMIZE YOUR USE  
OF SINGLE-USE MATERIALS!





*TAKEOUT PACKAGING FROM CAMPUS FOOD SERVICES IS COMPOSTABLE, BUT IT DOES COST YOU A NOMINAL FEE. IF POSSIBLE, EAT IN AND SAVE!*

*CHOOSE TO EAT IN OR EAT OUT... BUT THINK WASTE MANAGEMENT BEFOREHAND.*

**BY EXAMPLE**

*MANAGE SERVING SIZES ON CAMPUS. DIFFERENT SIZES PRICE OPTIONS ARE AVAILABLE.*

TAKE ADVANTAGE OF  
LEARNING ON CAMPUS!

YOU'LL LEARN SO MUCH  
GOOD INFORMATION HERE.

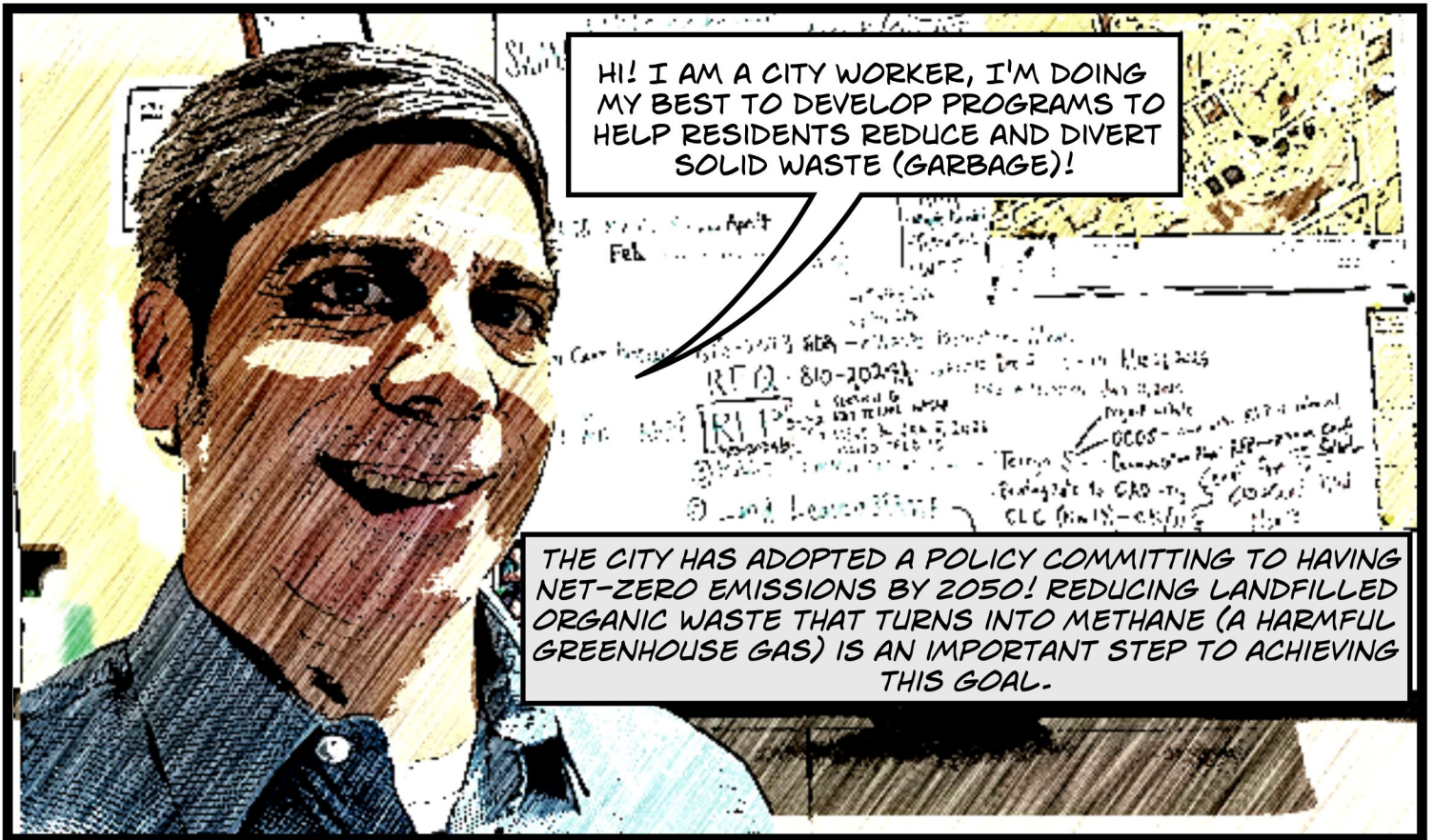


PSSST... START YOUNG AND  
LEARN ALL YOU CAN.

Collegiate

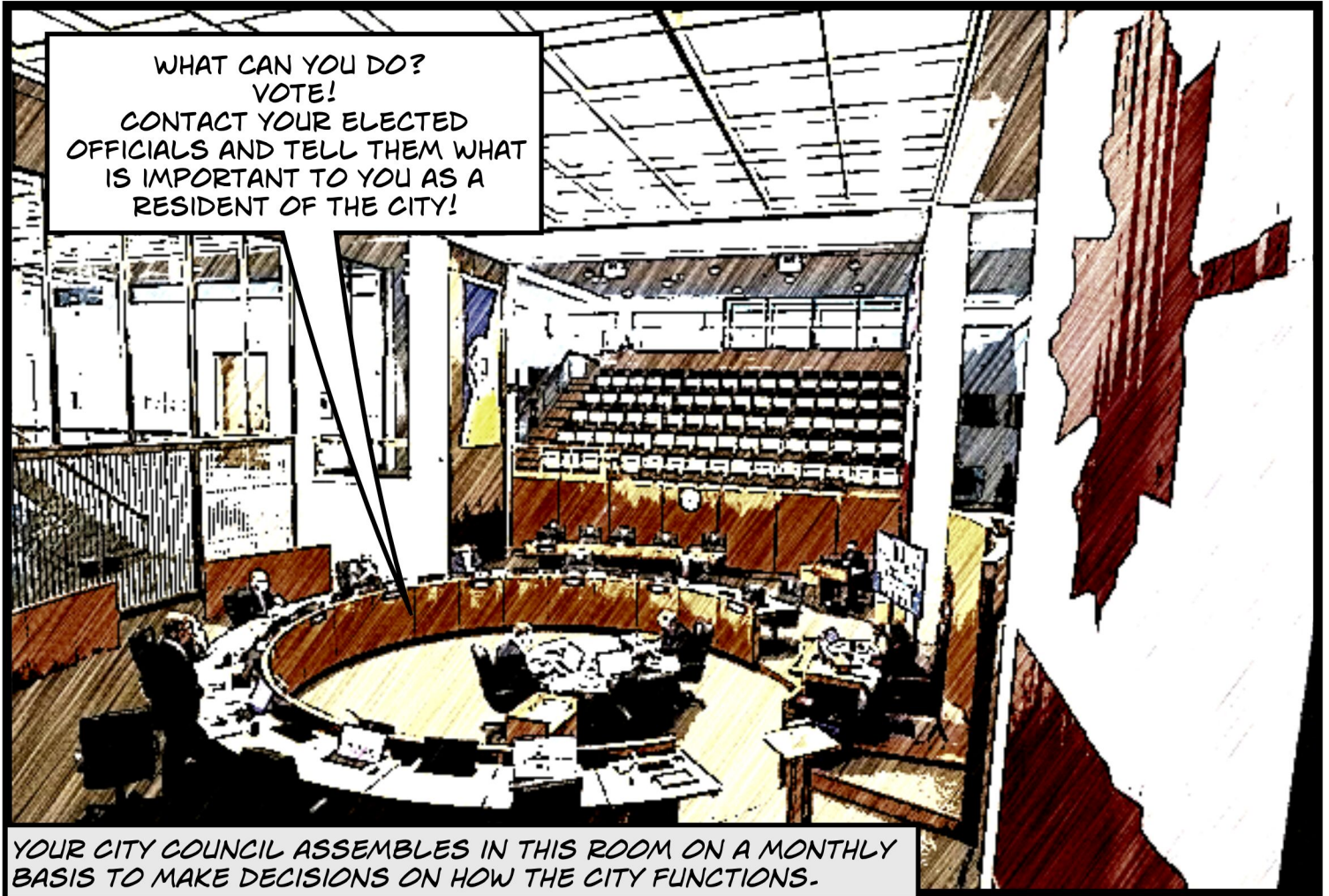
General Science

YOUR CAMPUS HAS A LODGER HIGH SCHOOL PROGRAM WITH HOPEFUL FUTURE UNIVERSITY STUDENTS. THEY LOOK FORWARD TO AN EXCELLENT ACADEMIC EXPERIENCE AS A YOUNG ADULT. BE THE EXAMPLES OF THEIR NEXT PHASE OF EDUCATION. REACH WIDE TO SHOWCASE AND TEACH WASTE MANAGEMENT!



HI! I AM A CITY WORKER, I'M DOING MY BEST TO DEVELOP PROGRAMS TO HELP RESIDENTS REDUCE AND DIVERT SOLID WASTE (GARBAGE)!

THE CITY HAS ADOPTED A POLICY COMMITTING TO HAVING NET-ZERO EMISSIONS BY 2050! REDUCING LANDFILLED ORGANIC WASTE THAT TURNS INTO METHANE (A HARMFUL GREENHOUSE GAS) IS AN IMPORTANT STEP TO ACHIEVING THIS GOAL.



WHAT CAN YOU DO?  
VOTE!  
CONTACT YOUR ELECTED OFFICIALS AND TELL THEM WHAT IS IMPORTANT TO YOU AS A RESIDENT OF THE CITY!

YOUR CITY COUNCIL ASSEMBLES IN THIS ROOM ON A MONTHLY BASIS TO MAKE DECISIONS ON HOW THE CITY FUNCTIONS.

WHAT AM I?  
YOUR NON-PROFIT PICK UP  
SERVICE! GIDDY UP! LET'S  
GO GET SOME FOOD  
WASTE!

# OPERATIONS!

THE BEGINNING OF THE DAY FOR A COMPOST TRUCK AT THE YARD USUALLY INCLUDES THE PRE-TRIP INSPECTION, SAFETY CHECKS, AND PREPARATION BEFORE HEADING OUT ON ROUTE.

Hey Winnipeg!

And we brought  
afford

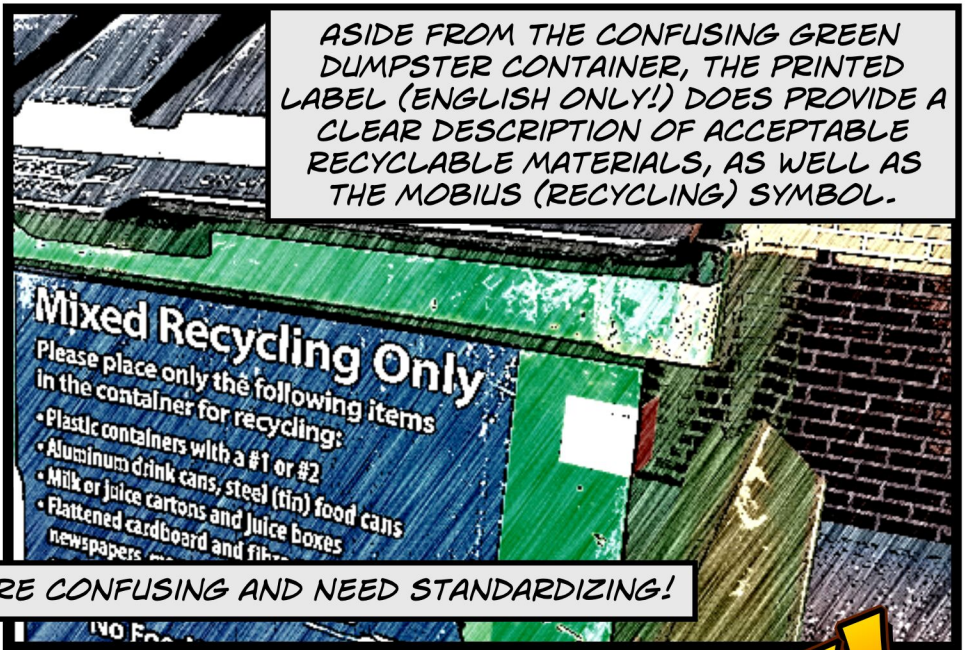
FOOD WASTE  
ACCEPTED ITEMS ONLY  
DÉCHETS ALIMENTAIRES  
ARTICLES ADMIS SEULEMENT

Free

ASK ME YOUR COMPOST  
AND WASTE MANAGEMENT  
QUESTIONS.

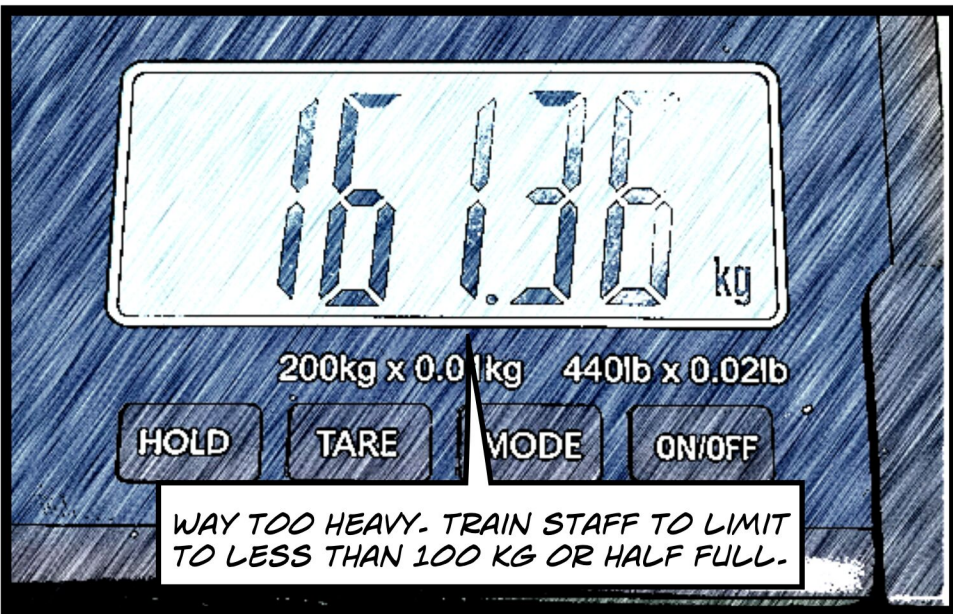
# TRAINING!

INFORMATION BOOTHS LIKE THIS FROM YOUR PROFESSIONALS GIVE THE PUBLIC THE OPPORTUNITY TO ASK QUESTIONS AND LEARN ABOUT WASTE MANAGEMENT IN THEIR CITY.



MISMATCHED BIN COLOURS ARE CONFUSING AND NEED STANDARDIZING!

I TAKE YOUR ORGANIC WASTE FOR COMPOSTING. THINK OF ME PLEASE!



An aerial, high-contrast, black and white photograph of a city grid, possibly a residential or commercial district. The image is heavily stylized with a high-contrast, almost binary color scheme, making it look like a halftone or a high-contrast scan. The text is overlaid in a bold, yellow-to-orange gradient font with a thick black outline, giving it a comic book or graphic design feel. The text is arranged in three lines, centered horizontally but slightly offset vertically.

**HOW DO YOU MANAGE  
CONSUMPTION  
FOR WASTE MANAGEMENT?**

WE ALL HAVE A ROLE TO PLAY TO  
ADDRESS THE WICKED PROBLEM OF  
WASTE MANAGEMENT...

# FINAL REFLECTIONS





LITTER IS ALL OF OUR RESPONSIBILITY.

LITTER DROPPED ON PURPOSE OR BY ACCIDENT BY ANYONE CAN AFFECT US ALL. IT GOES IN STREAMS IN NATURE, IN OUR RIVERS, IN OUR OCEANS, AND BACK TO US.

TO HELP OUR EARTH AND US, WE NEED TO WORK TOGETHER TO PREVENT LITTER FROM GOING TO THE STREETS AND WATER. TO INVITE WASTE MANAGEMENT TO HELP IS TO CLEAN UP OUR OWN MESS.

*FROM ISOLATION TO IMPACT: STRENGTHENING COMMUNITY COMPOST SYSTEMS.*



*WORKING ALONE IN A TRUCK CAN FEEL ISOLATING, BUT STAYING CONNECTED TO THE PEOPLE AND PURPOSE BEHIND THE WORK REINFORCES THAT IT'S ABOUT SERVING THE COMMUNITY.*

*A STRONGER COMPOST PROGRAM NEEDS CONSISTENT OVERSIGHT, QUALITY CONTROL, MORE INITIAL EDUCATION ON PROPER FOOD WASTE HABITS, AND ENFORCEMENT—SUPPORTED BY ADDITIONAL INFRASTRUCTURE AND FUNDING FROM DECISION MAKERS.*

WASTE OR RESOURCE? LET'S CHANGE THE LABEL!



ORGANIC WASTE FROM OUR HOMES,  
THE UNIVERSITY AND THE CITY CAN  
BE TRANSFORMED INTO VALUABLE  
RESOURCES.

THIS SHIFT IN MINDSET MOVES US  
BEYOND WASTE MANAGEMENT TO  
RESOURCE MANAGEMENT.

**INSTITUTIONAL AWARENESS MATTERS!**

# **Taking out our trash:** **Insights from the UWinnipeg** **2023 waste audit**

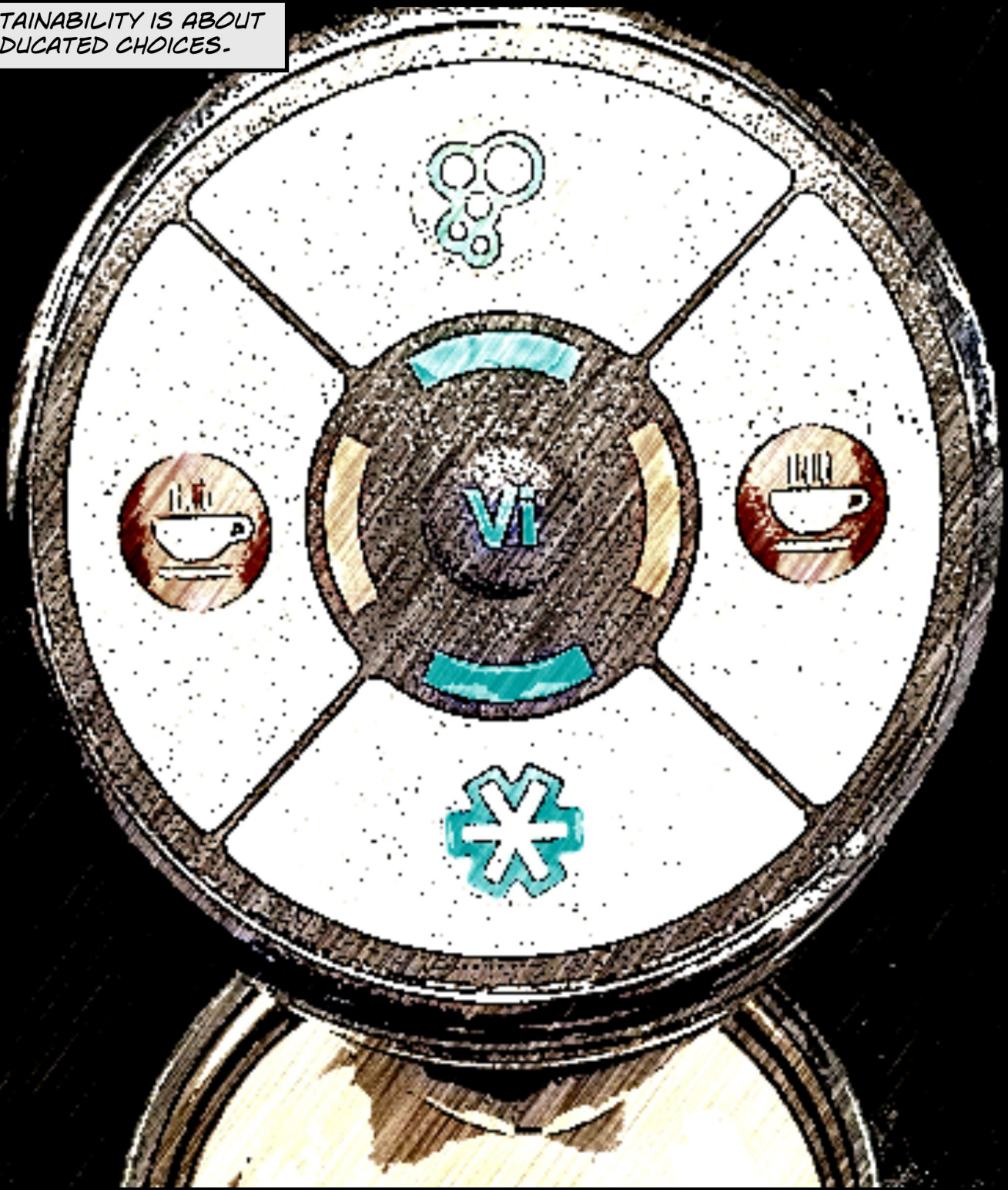


THE UNIVERSITY OF  
**WINNIPEG**

**Sustainability**

**LET'S CREATE INSTITUTIONAL AWARENESS THROUGH CREATIVE COMMUNICATIONS,  
SUPPORTED BY OFFICIAL UNIVERSITY OF WINNIPEG CHANNELS, TO IMPLEMENT  
SUSTAINABILITY INITIATIVES AND RECOMMENDATIONS EFFECTIVELY!**

SUSTAINABILITY IS ABOUT  
EDUCATED CHOICES.



WASTE MANAGEMENT IS ONLY HALF OF THE SUSTAINABILITY EQUATION. TO ACHIEVE BALANCE, HUMANS MUST TAKE RESPONSIBILITY FOR THEIR ACTIONS FOR THE SAKE OF THE EARTH. THIS INCLUDES STRONG LEADERSHIP, WISE CONSUMPTION, INNOVATION, RESPECT FOR WASTE MANAGEMENT, AND A GLOBAL PERSPECTIVE.



*SUSTAINABILITY IS A COLLECTIVE EFFORT.*



THE UNIVERSITY OF WINNIPEG  
UNITED COLLEGE

*PEOPLE COMING TOGETHER TO BUILD A STRONGER, MORE RESILIENT COMMUNITY. WHEN INDIVIDUALS, NEIGHBOURHOODS, AND ORGANIZATIONS COLLABORATE, THEY SHARE RESOURCES, SUPPORT ONE ANOTHER, AND CREATE SOLUTIONS THAT NO ONE COULD ACHIEVE ALONE.*

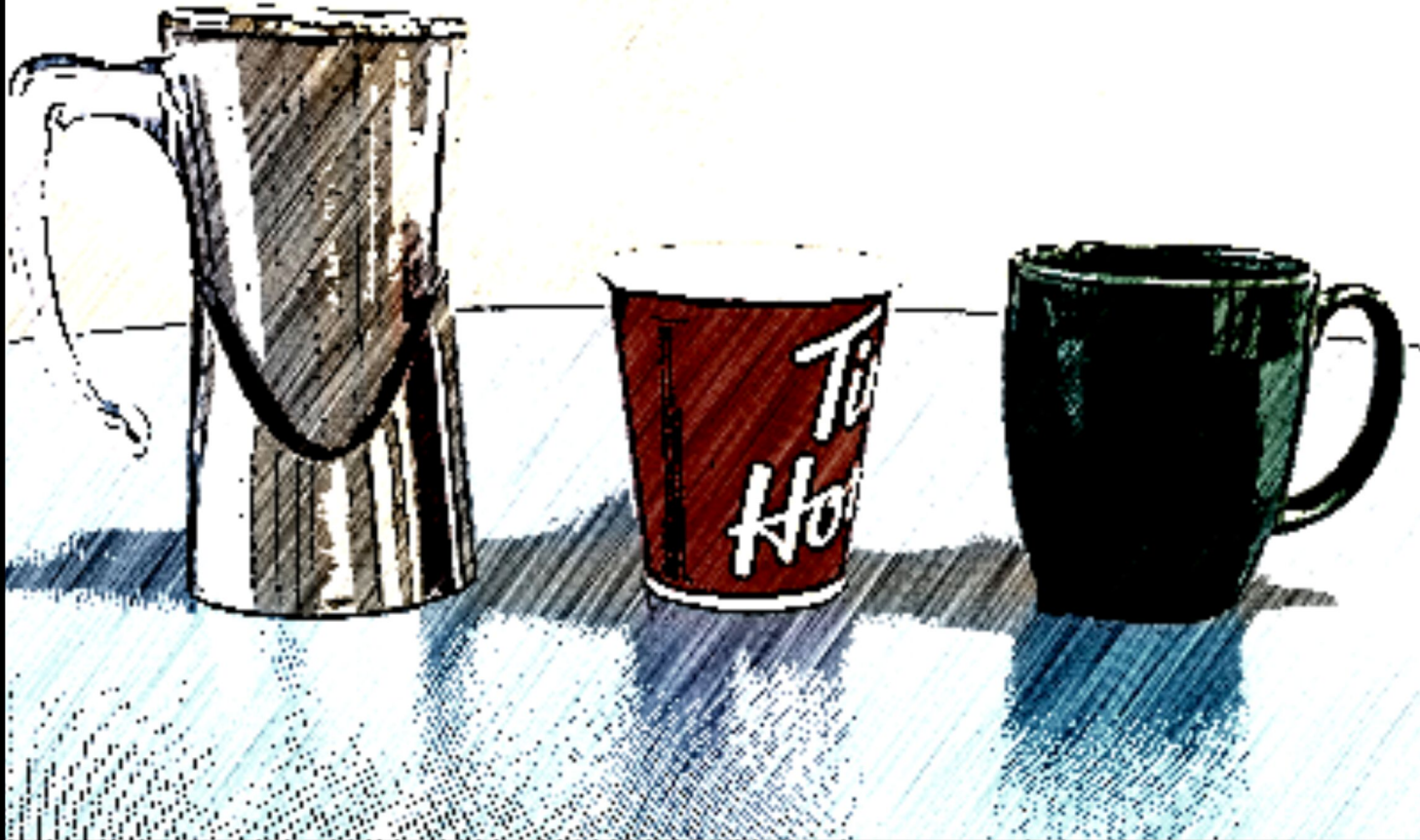
EDUCATION IS KEY.

WASTE MANAGEMENT SERVICES AND RULES VARY BY REGION. LEARNING ABOUT WASTE COLLECTION IN YOUR CITY, HOW IT IS MANAGED, AND KNOWING YOUR ROLE IN RESPONSIBLE RESOURCE MANAGEMENT BUILDS UNDERSTANDING AND, IN TURN, CARE.

THE CHALLENGES OF WASTE ARE NOT JUST A PROBLEM FOR A FEW TO SOLVE. WE ALL PARTICIPATE AND MUST BE AN EQUAL PART OF THE SOLUTION.



WASTE REDUCTION STARTS WITH INDIVIDUAL DECISIONS.



WASTE MANAGEMENT IS NECESSARY ONLY AFTER A PERSON MAKES THE CHOICE TO CREATE WASTE. SOMETIMES WE HAVE NO CHOICE... OR DO WE ALWAYS HAVE A CHOICE TO PURCHASE SOMETHING, OR NOT?

RECYCLING AND COMPOSTING ARE BETTER THAN LANDFILLING, BUT ARE STILL ENERGY INTENSIVE PROCESSES THAT RESULT FROM THE CREATION OF WASTE.

WE OFTEN HAVE CHOICES AVAILABLE (BESIDES JUST DOING NOTHING) THAT CAN REDUCE THE WASTE CREATED THEREBY REDUCING OUR RELIANCE ON LARGE-SCALE (EXPENSIVE) SYSTEMS TO MANAGE OUR WASTE FOR US.